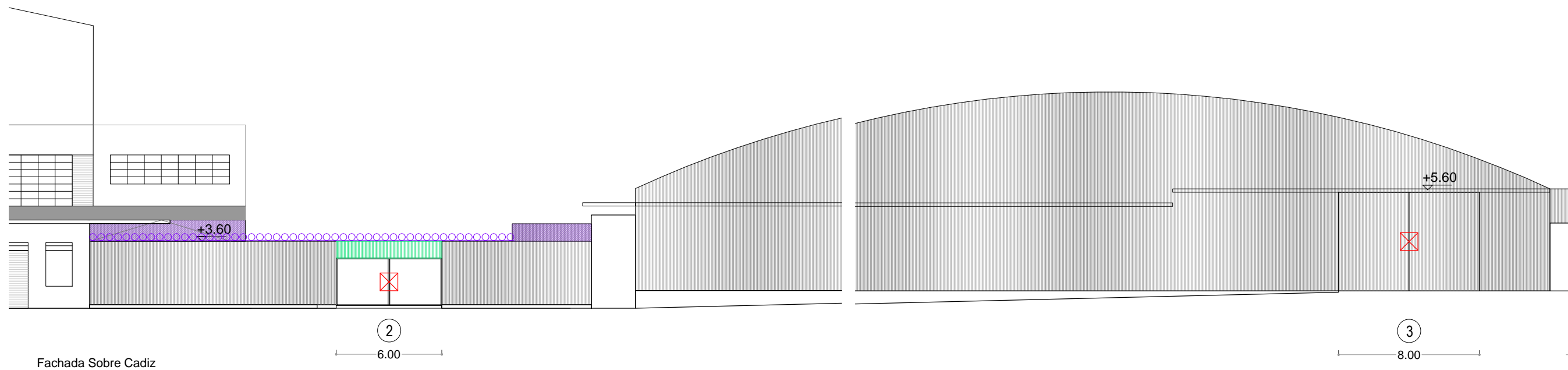


Fachada Sobre Cadiz









← Sigue

→ Sigue



Fachada Sobre Cadiz

**REFERENCIAS**

-  Tapia con bloques de hormigón
-  Fijar y colocar bloques del lado interior
-  Complemento con chapa
-  Malla metálica
-  Concertina de seguridad
-  Acceso anulado. Reforzar
-  Acceso habilitado
-  Construcción a demoler

**Medidas a rectificar**

